

THE BOISE BARD PLAYERS
PRESENT



Aug. 31 - Sept. 10



Touring S.W. Idaho

By Oscar Wilde
Directed by Josh Rippy

Made possible by

NATIONAL
ENDOWMENT
for the **ARTS**
arts.gov

arts
IDAHO

& our sponsors



WELCOME!



It is with great pleasure that The Boise Bard Players welcomes you to our production of The Importance of Being Earnest.

Oscar Wilde's timeless comedy has been a joy to bring to life, and we are incredibly proud of the hard work and dedication our talented cast and crew have poured into this production.

Theatre is a collaborative art form, and we are grateful for your presence here tonight. Your support sustains our passion for the stage, and it is your laughter, applause, and shared experience that make the theatre truly magical.

So, sit back, relax, and prepare to be transported into the delightful and absurd world of Victorian England.

Thank you for joining us on this theatrical journey, and we hope you have a wonderful evening filled with laughter and joy.

Sincerely,

The Boise Bard Players

GAST

Dakotah Brown	John (Jack/Ernest) Worthing
Chris Canfield	Algernon Moncrieff
Edith Dull	Gwendolyn Fairfax
Zoë Carr	Cecily Cardew
Ben Clegg	Lady Bracknell
Nova Calverley-Chase	Miss Prism
Ben Kemper	Rev. Canon Chasuble
Justin Tharpe	Lane/Merriman

PRODUCTION TEAM

Director: Josh Rippy

Stage Manager: Sophie Ventresco

Set & Sound Designer: Chris Canfield

Intimacy Coordinator: Jen Gorman

Dialect Coach: Tiara Thompson

Poster Designer: Hayden Pedersen

Marketing & Graphics: Tiffany Eller

ABOUT THE PLAY

Runtime: 2 hours with a 15-minute intermission

In the bustling world of Victorian London, where propriety reigns supreme, two young gentlemen lead double lives to escape the dullness of their daily routines. Meet Jack Worthing (Dakotah Brown), a responsible and respectable man leading an aristocratic life in the city, and Algernon Moncrieff (Chris Canfield), a charming but mischievous bachelor with a penchant for indulgence.

However, there's a twist in their otherwise ordinary lives. Both Algernon and Jack have created imaginary alter egos to steer clear of their obligations and commitments. Algernon uses the guise of "Bunburying" to escape to the countryside whenever he pleases, while Jack masquerades as his fictitious younger brother, "Ernest," in London, allowing him to seek adventure and love in the city.

As fate would have it, both men fall in love with two charming young ladies who are admirably determined to marry a man named "Ernest." Gwendolen Fairfax (Edith Dull), Algernon's sophisticated cousin, and Cecily Cardew (Zoë Carr), Jack's lovely ward, are convinced that they have found their ideal partners.

The stage is set for a hilarious web of mistaken identities, witty banter, and comic misunderstandings as Algernon and Jack navigate the complexities of their dual lives. As the story unfolds, truths are revealed, secrets are exposed, and hearts are tested.

MEET THE CAST



Dakotah Brown

John (Jack/Ernest) Worthing

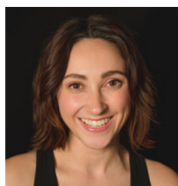
Dakotah Brown is rather over the moon to play Jack in *The Importance of Being Earnest*! Performing with BBP feels like home, and it's lovely to take a crack at our first non-Shakespeare with this incredible group of performers. In addition to being a founding member of the Boise Bard Players, Dakotah has also functioned as the Education Associate with Idaho Shakespeare Festival, taught with BCT, choreographed fights for Opera Idaho, performed burlesque at the VAC, and has written/co-written a number of plays including: *Every Man Shift for All the Rest* (HGT), *The Jabberwocky* (ITY TOUR), *The Disbelievable Domain of Zee* (ITY TOUR) and is currently working on the latest iteration of a play for anime nerds called *Giant Robot*. He has a BFA in acting from UC Santa Barbara, which he always mentions as kind of an inside joke.



Chris Canfield

Algernon Moncrieff

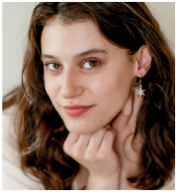
Chris is the founding artistic director of The Boise Bard Players and has been involved with every single one of BBP's seventeen productions. Born and raised in Boise, Chris attended Boise State for both his undergrad in theatre arts and masters in teaching. Apart from BBP, Chris has worked with the Idaho Shakespeare Festival, Boise Contemporary Theater, Alley Repertory Theater, and the Company of Fools. Chris is honored to be playing Algernon Moncrieff for the second time, the first being at Boise State in 2012.



Edith Dull

Gwendolyn Fairfax

Edith graduated from The College of Idaho with a BA in Theatre and an emphasis in vocal performance in 2015 and has worked with numerous professional theaters in the Treasure Valley, along with several out of state theaters. Her most recent roles with BBP include Lady Capulet from *"Romeo and Juliet,"* Mistress Ford from *"The Merry Wives of Windsor,"* and Ophelia from *"Hamlet."* She teaches kids musical theatre camps with the Idaho Shakespeare Festival School of Theater, and is the managing director and co-owner of Opera Elect, a local "new-opera" production company. When she's not performing, she enjoys throwing heavy things in a kilt, singing, video games, talking to her animals, and roaming the Owyhee Mountains with her dog and husband.



Zoë Carr

Cecily Cardew

Born and raised in Boise, Zoë quickly learned through BCT and ISF's educational programs that her disappointment in her middle-school-friends' aversion to "imaginary games" was shared by other theater makers. This discovery led her to attend Loyola Marymount University where she studied acting, including a term in Germany with the Moscow Art Theater and Michael Tschechow Studio Berlin. Having graduated in May with a degree in Theater and Philosophy, she now works in Los Angeles as an actor, prop designer, and set carpenter.



Ben Clegg

Lady Bracknell

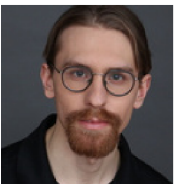
Ben Clegg hails from southeastern Idaho, where he graduated from BYU-Idaho with a minor in musical theatre. He moved to Boise with his NOW husband in 2006 to do summerstock and has been terrorizing local theatre stages ever since. He is excited to be making his debut performance with The Boise Bard Players.



Nova Calverley-Chase

Miss Prism

Nova is thrilled to be back with BBP as part of their first non-Shakespeare show. Originally from Cape Cod, Nova graduated with a B.A. in theatre performance from Idaho State University. She has had the opportunity to perform with various theaters and improv troupes in both Idaho and Utah. Favorite theatre roles include Marina in *Seven* (Pygmalion Productions), John Heminges in *The King's Men* (The Sting & Honey Company), Emilia in *Desdemona: A Play About a Handkerchief* (Fringe), and Annette in *God of Carnage* (Boise Little Theater).



Ben Kemper

Rev. Canon Chasuble

Ben is delighted to return to The Boise Bard Players after playing Polonius and a variety of western clowns in "Hamlet," along with Dr. Caius in "The Merry Wives of Windsor" and Shirtless Fairy in "A Midsummer Night's Dream." Ben is a storyteller who has been touring Idaho with his salmon story, "Sink Or Swim: Salmon and the River of Life," and telling to audiences of all ages at local libraries. He also wrote the TYA swashbuckler, "Are You Now Or Have You Ever Been A Pirate?" He is very grateful for the opportunity to work with such talented folk, and to say one of his favorite lines in any play ever.



Justin Tharpe
Lane/Merriman

Justin Tharpe has previously appeared with this company in *Taming of the Shrew* and *Richard III*. He is also the Treasurer of the BBP and an avowed supporter of its mission. He currently teaches English at Kuna Middle School.

ABOUT THE BOISE BARD PLAYERS



The Boise Bard Players (BBP) is a mobile, minimalist non-profit theatre company based in Boise, ID, making Shakespeare and other classical plays economically and emotionally accessible to the Treasure Valley while paying artists a working wage.

The number one thing we hear from audiences is, "Not only did I understand Shakespeare, but I loved it!"



SPECIAL THANKS

***This production was made possible
by a generous grant from:***



Season Sponsors

Season Sponsors (\$10,000+)

Anonymous

Production Sponsors (\$5000+)

Josh Johnston

Benefactors (\$2500+)

Dr. Rick Capezza

Allies (\$500+)



- Robert J. Williams at Idaho Legal Solutions, PLLC
- Boise Benefit Auctions
- Cary Judd-Media Creator
- Anonymous



PATREON Supporters

\$5 The Rabble

Chad Shohet
Danny Vogt
Edith Grace
Erin Chancer
Hannah Thomas
Hayden
Joan
Joanne Smith Gray
Joe Colletti
Juliana Giovannini
Rob F
Tiffany Eller

\$10 The Hautboys

Ali Johnson
Andre Banks
Anna Belt Gordon
Fradenburgh
Jenny Wolff
Jessica Morris & Ben Burdick
Mark Allen
Mark Suderman
Matthew Baltzell
Nova Calverley-Chase
Peter Fridel
Rebecca Ahlering
Sandi Augsburg
Susan Hudson
Will Hudson

\$20 The Attendants

Charlie Gibson
Diane Clayton
Elizabeth Greeley
Joe Golden
Lane Blackmer
Lex Gonzalez
Marie Wallace
Mr. & Mrs. Garth F. Hopson
Stephanie Baird
Terri Dillion

The cast and crew would also like to thank...

Boise State University Theater Arts

Nate Pohl

Michael Baltzell

Stephanie & Tim Baird

The Canfield Family

Diane Clayton

Andre Banks

Hayden Pedersen

Justin Tharpe

Josh Rippy

Dakotah Brown

Tiffany Eller

Cat Bullock

Jen Gorman

Tiara Thompson

The Bishops' House

Star Riverhouse

Nampa Valley Grange 131

Mountain Home Arts Council

Watson's Mystery Cafe

Rachel Baxa

Mindy Hackler

Leta Harris Neustaedter



Love what you see here today? **Become a sponsor!**

The Boise Bard Players believes in the power of the arts to inspire, entertain, and unite communities. By becoming a sponsor, you can play a vital role in supporting our mission to bring exceptional theatrical experiences to our audience. Your partnership ensures the growth of the arts in our community and beyond.

Why sponsor BBP?

Visibility

Gain exposure to a diverse, engaged audience.

Community Engagement

Show your commitment to enriching the arts in our community.

Brand Affiliation

Align your brand with the arts and innovation

Exclusive Benefits

Enjoy VIP tickets, sit in on rehearsals, and more!

Join us in creating unforgettable experiences and enriching our community through the arts. We look forward to partnering with you. Email Managing Director Tiffany Eller at info@boisebardplayers.org to get started.

Support us monthly on



PATREON |

MEMBERS RECEIVE...

Free tickets to performances

Early access to tickets

Recognition on website & programs

*Memberships
start at \$10/mo.*

patreon.com/theboisebardplayers



COMING THIS WINTER



Measure FOR Measure


December 8-17

In Shakespeare's "Measure for Measure," the timeless struggle for justice, morality, and power in a city divided by corruption and hypocrisy resonates with striking relevance in today's world, where questions of ethics and authority continue to shape our society's fabric.

Thank you for coming!



For more Shakespeare edu-tainment and event announcements, follow us on Facebook and Instagram

  [@boisebardplayers](https://www.instagram.com/boisebardplayers)
www.boisebardplayers.org